

## Installation and User Manual



44, Ambazari Layout, Nagpur, MH, India – 440033  
Phone: +91 712 223 7066, 395 8918 Fax: +91 712 223 5838  
Website: <http://www.kkeim.com>



## Contents

Using This Help.....	3
Special Messages .....	4
Locating Help .....	5
About Kmita Gallery .....	6
Kmita Gallery Features.....	7
Kmita Gallery Requirements.....	9
Getting Started.....	10
Uploading to the Server.....	11
Setting Folder Permissions.....	12
Entering License Information.....	16
Creating and Editing Categories and Images .....	18
Creating a Category and Uploading Images.....	19
Settings.....	25
HTML Template Configuration .....	29
Main Category Template .....	30
View Image view page.....	32
Search Templates .....	33



# **Chapter 1**

## **Using This Help**



## Special Messages

The following words and symbols have special meaning in this guide.



**Note** : Important information concerning the operation of Kmita Mail V2



**Caution**: Failure to follow directions may result in malfunctioning and data loss.



**Error**: Failure to follow directions could lead to the errors .



## Locating Help

Kmita Mail provides you with several ways to find help.

1. Setup Manual
2. Knowledgebase : [http:// support.kkeim.com/faq](http://support.kkeim.com/faq)
3. Website Support : [http:// support.kkeim.com/](http://support.kkeim.com/)
4. Email Support : [wecare@kkeim.com](mailto:wecare@kkeim.com)



**Note** : Always mention Location of Kmita Mail on your server and the form you are trying to integrate with Kmita Mail when communicating with Support.



## ***Chapter 2*** **About Kmita Gallery**



## Kmita Gallery Features

1. Online Photo Album
  - Browse galleries by multi-level categories
  - View enlarged photos & details such as publish date, hits, rating, file name, file size, comment, author, etc
2. Bulk Upload Your Photos
3. Thumbnail Creation, Resize it
4. Search Engine Friendly URL
  - Pages can be indexed by various Search Engines
  - Publish photo albums in static URL for better search engine ranking
5. Easy-to-Use Back-End System
  - Add, edit and update photos, photo categories, descriptions, comments, etc
  - Search photos easily & sort photos sequence
  - Personalize notification email for the administrator when photos deleted
6. Bulk Upload your Photos from directory
7. Fast and easy to setup
8. Support and Knowledgebase
  - Installation Request
  - Support Tickets
  - Knowledge Base
9. Web based installation utility features
10. Template Based
11. Unlimited Categories Images
12. Zero Programming Hassles
13. Available in PHP
14. Categorized Display, Easy to Navigate
15. Option to Get your Image Rated
16. Multi Language Admin Panel
17. Installed on your website
18. Easy Integration with web design pages
19. Search Photo by Category and Keyword



20. Define thumbnail and enlarged photo size in pixels

21. Add watermark to your photo





## Kmita Gallery Requirements

Since Kmita Gallery is installed on your server. Your server should fulfill the following requirements. Kmita Gallery can be installed on mostly any Linux, Unix or Windows Server as we have kept the PHP requirements to very low.

- PHP 4.1.0 or higher installed on the server running in Normal Mode.
- Send Mail installed or any SMTP server with or without authentication.
- MySQL Writing privileges( if you wish to add data to database)



## **Chapter 3** **Getting Started**



## Uploading to the Server

You have downloaded the ZIP file from your account [ <http://login.kkeim.com> ]

Since the script is in PHP therefore follow the procedure below.

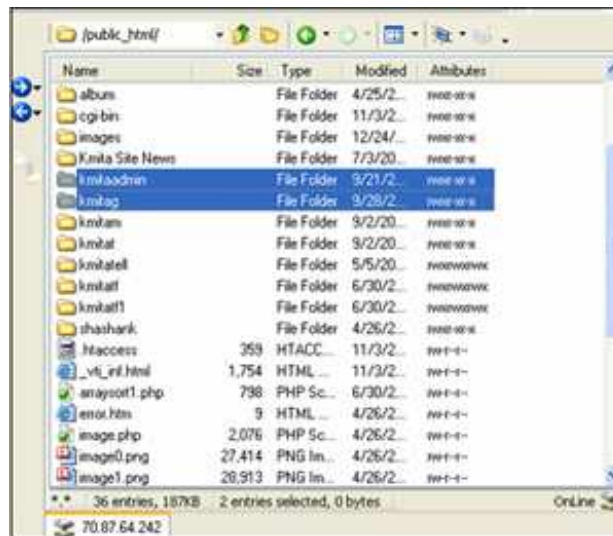


**Note** : On UNIX and Linux folder is referred to as “directory” . Since most of the people use Windows as their operating system, we would refer directory as folder in this help document.

Unzip the contents of the ZIP on your local hard drive, preferably on your desktop.

Now connect to Internet, open your favorite FTP program. Some of the most common FTP programs are CuteFTP, WS\_FTP, AceFTP (Freeware), etc.

Upload the “**upload**” folder to the HTML root of your website. The root of your website may be called as *htdocs*, *httpdocs*, *wwwroot*, *www\_public*, *www\_public\_html*, etc.



## Setting Folder Permissions

Kmita Gallery creates files and folders on your server and requires read , write and execute permissions.

The following files and folders require CHMOD 777

File / Folder	Permission [CHMOD]
/kmitaadmin/sntp.php	777
/kmitaadmin/login.php	777
/kmitaadmin/kmitag.php	777
/kmitaadmin/login.php	777
/kmitaadmin/kmitag/images/	777

The image below shows the view of ACE\_FTP. Right Click on the “kmitaadmin” folder and click properties.

Select all the checkboxes or type CHMOD value directly to 777 and click “OK”.



File Explorer window showing a directory listing and a Properties dialog box.

Directory listing (Name, Size, Type, Date Modified):

Name	Size	Type	Date Modified
image		Folder	
kmita		Folder	
admin		Folder	
admin		Folder	
admin		Folder	
chan		Folder	
func		Folder	
index		Folder	
kmitam.php	127	PHP Sc...	4/26/2...
lic_temp.html	91	HTML ...	4/26/2...
license.php	4,348	PHP Sc...	4/26/2...
login.php	118	PHP Sc...	4/26/2...
login_temp.html	97	HTML ...	4/26/2...
login1.php	695	PHP Sc...	4/26/2...
logout.php	1,397	PHP Sc...	4/26/2...
php.php	351	PHP Sc...	4/26/2...
smtp.php	362	PHP Sc...	4/26/2...
smtp_settings.php	5,994	PHP Sc...	4/26/2...

Properties dialog box (File: 5KB (4,955 bytes), Modified: Multiple Dates):

Attributes:

Owner	Read	Write	Execute
Owner	<input checked="" type="checkbox"/>	<input checked="" type="checkbox"/>	<input checked="" type="checkbox"/>
Group	<input checked="" type="checkbox"/>	<input checked="" type="checkbox"/>	<input checked="" type="checkbox"/>
Everyone	<input checked="" type="checkbox"/>	<input checked="" type="checkbox"/>	<input checked="" type="checkbox"/>

CHMOD Value: 777

Buttons: OK, Cancel, Apply



## Logging on to Kmita Admin

Now that you have uploaded and set permissions, you now need to open your browser window.

Enter: <http://www.yourwebsite.com/kmitaadmin/> to get page like this.

Enter your username and password which are set as “admin” and “admin” respectively. You can change the password once you login into Kmita Admin.

A screenshot of the Kmita Admin login page. The page has a white background with the 'Kmita Admin' logo in the top left. Below the logo is a grey header area with the text 'Kmita Website Administration'. The main content area is white and contains a login form with the following elements: a heading 'Please enter your Administration Username and Password', a 'Username' field with 'admin' entered, a 'Password' field with 'AAAAAAAAAA' entered, and a 'Login' button. At the bottom of the page, there is a copyright notice: '© KKE Info Media 2006'.

Once you login, you have following links in the Kmita Gallery Administration window.

- Browse Categories
- Search Images / Categories
- Bulk Add By Directory
- Bulk Add By Upload
- Global Settings
- Database Settings
- License Management



## Kmita Image Gallery

Version : 1.0

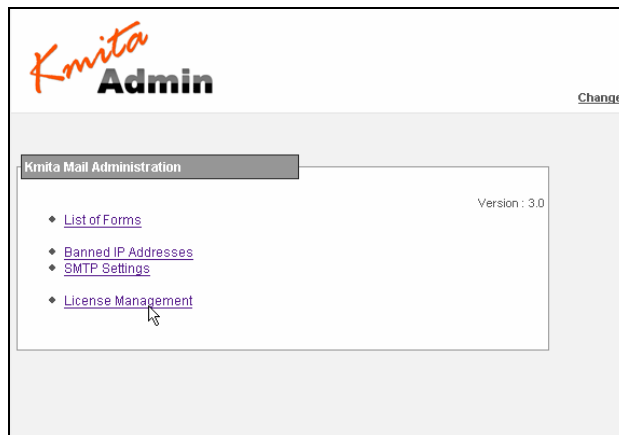
- [Browse Categories](#)
- [Bulk Add by Directory](#)
- [Bulk Add by Upload](#)
- [Global Settings](#)
- [Search Categories/Images](#)
- [License Management](#)



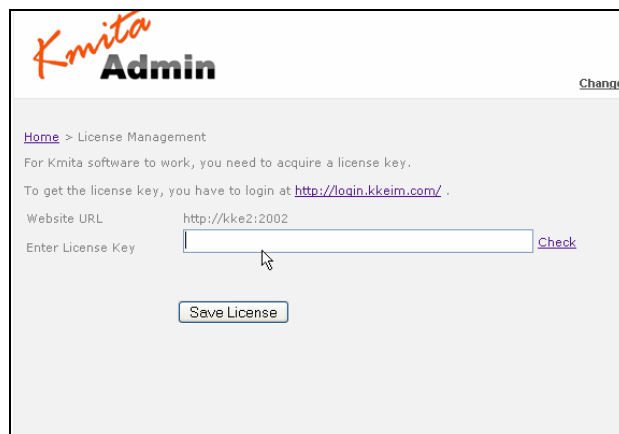
## Entering License Information

To get started, you need to create and add license key to your installation.

Click on "License Management" in your "Kmita Gallery Administration" window.



Goto <http://login.kkeim.com> . Using your username and password sent to you, login into your account and create your Kmita Gallery Key.



Enter the key in the field shown in the figure above and press "Save License".

If you get several PHP warnings after saving the password, there is a problem with the Permissions provided to "*kmitaadmin/kmitag.php*"





". Please see "Setting Folder Permissions"

You can also download the file `/kmitaadmin/kmitag.php` and save the license key in the variable and upload it back again.

```
/kmitaadmin/kmitag.php ----
```

```
<?
```

```
//This file contains license for your kmita script.
```

```
$license_key = "186Y-Q65J6-3SW5-6EN72-P2A2M-42E49-0FE5-982";
```

```
?>
```

Once this is done you are ready to add images to your Gallery script.



## ***Chapter 4*** **Creating and Editing Categories and Images**



## Creating a Category and Uploading Images

Click on “**Browse Categories**” to view the list of Categories and Images in the categories.

On this page, you can find the list of all the Categories and the images. You can do the following on this page to images and categories.

- Add Category
- Add Image
- Edit
- Delete
- Mark Position of display
- Mark Active / Inactive

**Kmita Admin** [Change Password](#) [Logout](#)

[Administration Home](#) > Kmita Gallery Browse Categories

Find the list of all the recommended categories already setup below. You can edit the categories processing settings and you can also delete the settings.

[Click here to add new Category](#)

Thumbnail	Category Name	Status	Actions
	<a href="#">category1 [4]</a>		
	<a href="#">category2 [2]</a>		
	<a href="#">category3 [3]</a>		

[Click here to add new image](#)

Thumbnail	Image Caption	Status	Actions
	<a href="#">image1</a>		
	<a href="#">0-1</a>		



Click on **“Click here to create new Category”**.

A screenshot of the Kmita Admin web interface. At the top left is the 'Kmita Admin' logo. Below it is a breadcrumb trail: 'Administration Home > Kmita Gallery Browse Categories > Add Category'. A text instruction reads: 'Enter a name for listing of your choice. For ex. Pets, Products, captions etc.'. The form contains several fields: 'Category Name' with an empty text input; 'Description' with a large text area; 'Start Date' with a date picker showing '2007-09-28' and a format indicator '[YYYY-MM-DD]'; 'Subcategory Of' with the value 'Root'; and 'Thumbnail Image' with an empty text input and a 'Browse...' button. At the bottom of the form is a 'Save' button.

Enter a name for your Category. For Ex.: if you are making a Gallery for Greeting cards, You can type the category name as 'Greeting cards'.

This is the root category for images, now you can create subcategory of this root category For this, click on to the category name

On this page, find the list of all subcategories for this category.



## Add Images

There are three possible ways of adding images as

### Adding Images Individually

Click on “**Browse Categories**” and then

Click on the URL "**Click here to add new Images**"

Enter the Image caption, description about image, date and to browse for the Image file.

The screenshot shows the 'Kmita Admin' interface. At the top left is the 'Kmita Admin' logo. On the top right, there is a 'Logout Page' link. Below the logo, a breadcrumb trail reads: 'Administration Home > Kmita Gallery > Browse Categories > Add Image'. A note says: 'Enter a name for setting of your choice. For ex., Pets, Products, captions etc...'. The form contains the following fields: 'Category Name' with a dropdown menu showing 'Root'; 'Image Caption' with a text input field; 'Description' with a larger text area; 'Image Date' with a date picker showing '2007-09-28' and a format '(YYYY-MM-DD)'; and 'Image File' with a text input field and a 'Browse...' button. At the bottom of the form is a 'Save' button.



## Adding Images from a directory having images on server

Click on the URL “Bulk Add By Directory”

Find the list of directories and number of images in the directories respectively. Click on the directory names to browse and check the check boxes besides the directory names to select the directories.

Select one or more directories from the list and click on the “save directories” button.

The screenshot shows the Kmita Admin interface. At the top left is the 'Kmita Admin' logo. Below it, there's a breadcrumb trail: 'Administration Home > Bulk Add from Directory'. A message states: 'Select directory from the list which contains the images. You can't Upload images in the directory directly when you select any folder.' Below this is a section titled 'Current Directory - Folders'. It contains a table with two columns: 'Directory Name' and 'No. of Images'. The table lists several directories, including 'ASSETS\_IMAGES', 'ASSETS\_IMAGES', 'ASSETS\_IMAGES', 'ASSETS\_IMAGES', 'ASSETS\_IMAGES', 'ASSETS\_IMAGES', 'ASSETS\_IMAGES', 'ASSETS\_IMAGES', 'ASSETS\_IMAGES', 'ASSETS\_IMAGES', 'ASSETS\_IMAGES', and 'ASSETS\_IMAGES'. The 'ASSETS\_IMAGES' directory has 2 images, while all others have 0. There are checkboxes next to the 'ASSETS\_IMAGES' and 'ASSETS\_IMAGES' entries.

Directory Name	No. of Images
<a href="#">Move one level up</a>	
<a href="#">ASSETS_IMAGES</a>	0
<a href="#">ASSETS_IMAGES</a>	0
<a href="#">ASSETS_IMAGES</a>	0
<input type="checkbox"/> <a href="#">ASSETS_IMAGES</a>	2
<a href="#">ASSETS_IMAGES</a>	0
<a href="#">ASSETS_IMAGES</a>	0
<a href="#">ASSETS_IMAGES</a>	0
<a href="#">ASSETS_IMAGES</a>	0
<a href="#">ASSETS_IMAGES</a>	0
<a href="#">ASSETS_IMAGES</a>	0
<input type="checkbox"/> <a href="#">ASSETS_IMAGES</a>	0

This gives the list of images inside these directories.

Select the images and select the category on which you want to add images. Click on the “Save button”, Images added in respective category.

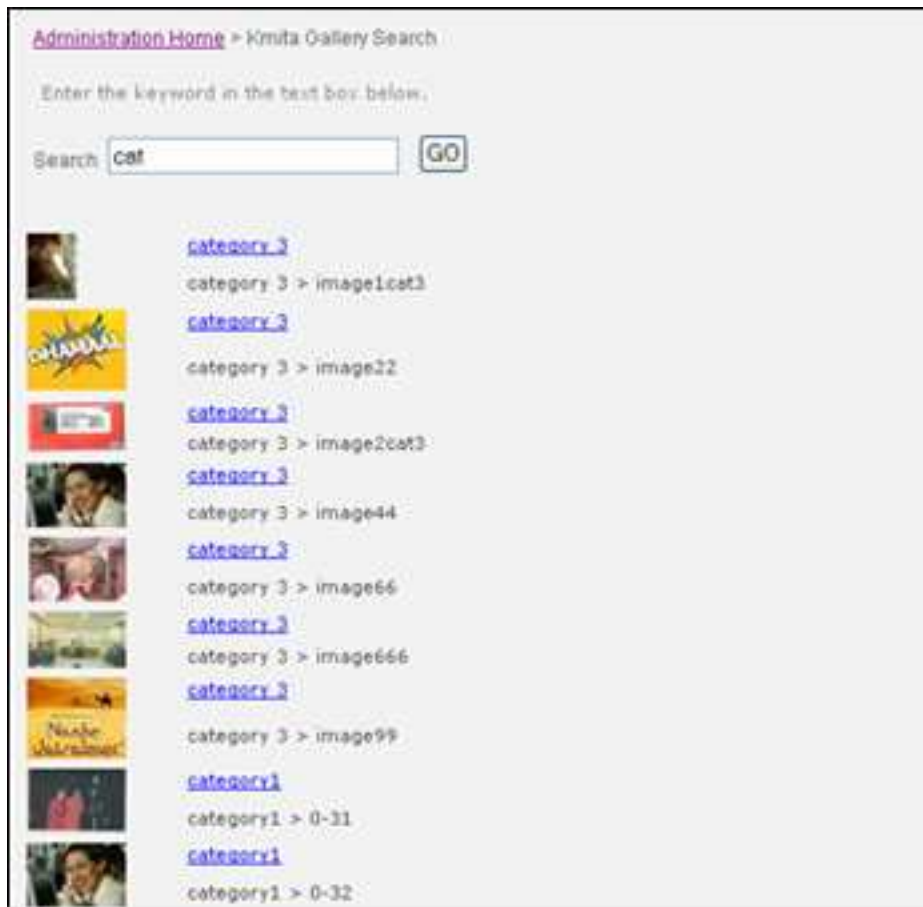




## Search Categories and Images

You can search the categories and images; go to Kmita admin page Click on to the “**Search categories/images**”

Enter the keyword and click on the “Go” to see the results.







## **Chapter 5 Settings**



## Global Settings

Kmita Gallery allows you to set the image settings, Front end settings.

Go to the Kmita admin page, Click on the “**Global Settings**”



You can change the look of the image as you wish. You can set the maximum size of the image. If you want a watermark text should appear on the image, For this Gallery allows you to set some features for watermark like Text, Font, Font size, Color, Position of the text, Transparency in percentage.



### Global Settings

Watermark Text	<input type="text" value="test"/>									
Watermark Font	<input type="text" value="Arial"/>									
Watermark Fontsize	<input type="text" value="30"/> pts									
Watermark Position	<table border="1"><tr><td>Top Left</td><td>Top Center</td><td>Top Right</td></tr><tr><td>Middle Left</td><td>Middle Center</td><td>Middle Right</td></tr><tr><td>Bottom Left</td><td>Bottom Center</td><td>Bottom Right</td></tr></table>	Top Left	Top Center	Top Right	Middle Left	Middle Center	Middle Right	Bottom Left	Bottom Center	Bottom Right
Top Left	Top Center	Top Right								
Middle Left	Middle Center	Middle Right								
Bottom Left	Bottom Center	Bottom Right								
Watermark Color	<input type="text" value="Black"/>									
Watermark <b>Transparency</b>	<input type="text" value="10 %"/>									
Admin Email	<input type="text" value="kartik.borikar@kkendia.com"/>									
Maximum Image Size	<input type="radio"/> 640 x 480 <input type="radio"/> 800 x 600 <input checked="" type="radio"/> 1024 x 768 <input type="radio"/> 2048 x 1438									
Symbol between Category	<input type="text" value="&gt;"/>									
<input type="button" value="Save"/>										



## Database Settings

You can change the database connection details by clicking on “**Database Settings**” on the “Kmita Gallery Administration” window.

Following details can be changed

- Database Host
- Database Username
- Database Password
- Database Name



**Caution:** Failure to follow directions may result in malfunctioning and data loss. Please contact your host if you don't know the correct details. Kmita Gallery will only work if the following details are correct.



## ***Chapter 6*** **HTML Template Configuration**



## Main Category Template

All the template files are in “/kmitag/” folder on your server.

### 1. category\_image.html

<code>[[CATEGORYNAME]]</code>	Replaces with the link of the category.
<code>[[CATEGORIES]]</code>	List of the categories. This text is replaced by “category_struc.html” file in a loop.
<code>[[RESULTS,NUMBER OF IMAGES ON ONE PAGE,NUMBER OF COLUMNS]]</code>	IMAGES is replaced by List of the Images. Eg. <code>[[RESULTS,9,3]]</code> The code shown will show 9 images on a page in 3 columns. This is replaced by “image_struc.html” file in a loop.
<code>[[RESULTS_PAGES]]</code>	Shows the Previous and Next links along with page numbers.  <a href="#">&lt; Previous</a> <a href="#">1</a> <a href="#">2</a> <a href="#">3</a> <a href="#">Next &gt;</a>
<code>[[CATEGORY]]</code>	Name of the Category.

### 2. category\_struc.html

<code>[[CATEGORYNAME]]</code>	List of Categories
<code>[[ IMAGE,WIDTH,HEIGHT ]]</code>	Thumbnail of the category. Eg. <code>[[ IMAGE,80,60 ]]</code>  80 pixels as width and 60 pixels as height



### 3. image\_struc.html

This template is used to list the image thumbnails, For this width and height of the thumbnail can be changed.

[[IMAGENAME]]	Name of the Image
[[[DATE]]]	Date created when image added
[[SUMMARY]]	Description of the Image
[[[IMAGE,300,200]]]	Image , 300,200 represents the width and height of the image
[[VIEWED]]	No. of times the image viewed
[[RATING]]	Rating for the image



## View Image view page

This is the template which is opened when a visitor clicks on the image thumbnail to view full size image.

### 1. image.html

[[CATEGORYNAME]]	Name of the category in title bar in the main page
[[IMAGENAME]]	Name of the Image
[[DATE]]	Date created when image added
[[SUMMARY]]	Description of the Image
[[IMAGE,800,600]]	Actual Image , 300,200 represents the width and height of the image
[[VIEWED]]	No. of times the image viewed
[[RATING]]	Rating for the image
[[VOTES]]	No of votes for image
[[RATINGBAR]]	Replaces with the rating bar in <i>ratingbar.html</i> and <i>ratingbarthanks.html</i>

### 2. ratingbar.html

This page has the rating form which is used for rating the images.

[[CATID]]	Category ID
[[IMAGEID]]	Image ID of the Image





## Search Templates

### 1. search\_result.html

This is the main search template which gives final result of search.

[[KEYWORD]]	Word which is used for the search
[[NUMBER]]	No of record match with search item
[[STARTNUM]]	Starting number on this page
[[ENDNUM]]	End number on this page
[[NUMBER]]	No of record match with search item
[[RESULTS,10]]	Display Actual result
[[RESULTS_PAGES]]	Navigation

### 2. search\_list\_repeat.html

[[SR_NO]]	Serial number for the results
[[ IMAGE,60,40 ]]	Image thumbnail
[[TITLE]]	Name of the category
[[CAT]]	Name of the category
[[IMG]]	Name of the image



## Changing the Kmita Admin Language

In Kmita Admin, the language of the complete Admin Panel can be changed.

Just copy the language file from the "**Language Files**" directory in **kmitaadmin** directory and save it in **kmitaadmin** directory.

Now, find and delete the earlier "**admin\_lang.php**".

Rename the file you copied from "**Language Files**" as "**admin\_lang.php**".

Currently the language files are available in

English

Spanish

French